

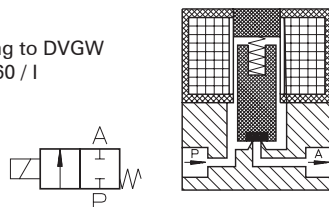
Type MA 202

2-way solenoid valve
direct actuated, NC
(normally closed)



Application

Gases according to DVGW
worksheet G 260 / I



Type/ Order No.	Orifice [mm]	Port size	Pressure range [bar]		Q* [m³/h]	Weight [kg]	CE number acc. to DIN EN 161
			AC	DC			
MA 202-016	3,5	M 12 x1	0 - 3	-	0,32	0,250	CE-0085AN0079
MA 202-017	3,5	M 12 x1	-	0 - 3	0,32	0,250	CE-0085AN0079
MA 202-026	3,5	M 12 x1	-	0 - 0,05	0,32	0,250	CE-0085AN0080

Sealing material: **P** (NBR)

*Q: by delta p 2,5 mbar

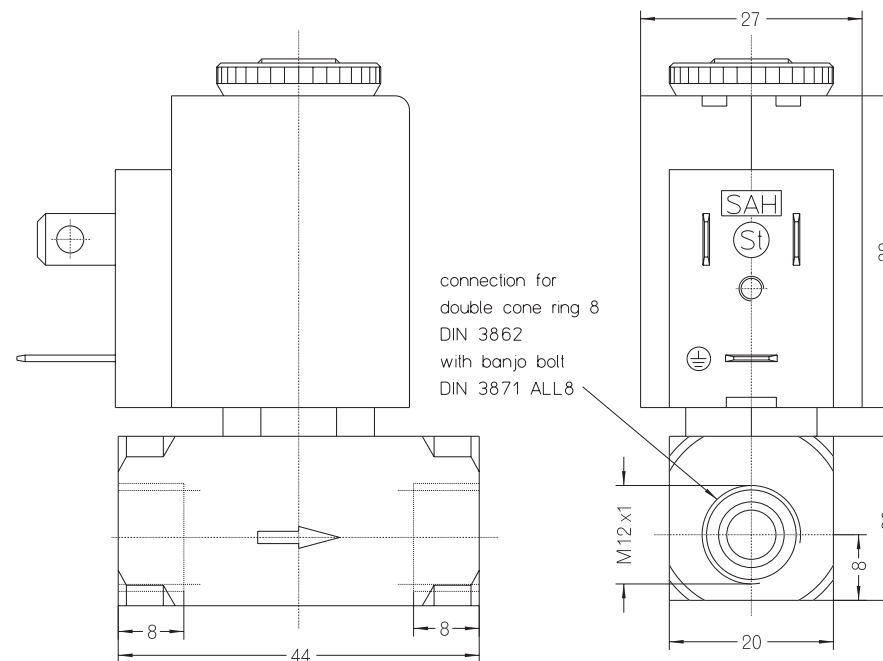
Body material: Brass
 Inner parts: Stainless steel (1.4105)
 Mounting direction: Free, preferred upwards
 Max. ambient temp.: -15 °C to +60 °C
 Approval: DIN EN 161 KI.A
 Standard voltage: DC: 24 V, 12 V
 AC: 230 V, 115 V, 42 V,
 24 V, 12 V (50 or 60 Hz)

Power consumption: 11 VA / 8 W
 (8 W for MA 202-026)
 Voltage tolerance: -15%... +10%
 Duty cycle: 100% (MA 202-026)
 Operating frequency: max. 1000/min
 Degree of Protection: IP 54 (EN 60529)

168

Other configurations upon request

staiger



The right to modification is reserved

169

Dimensions in mm